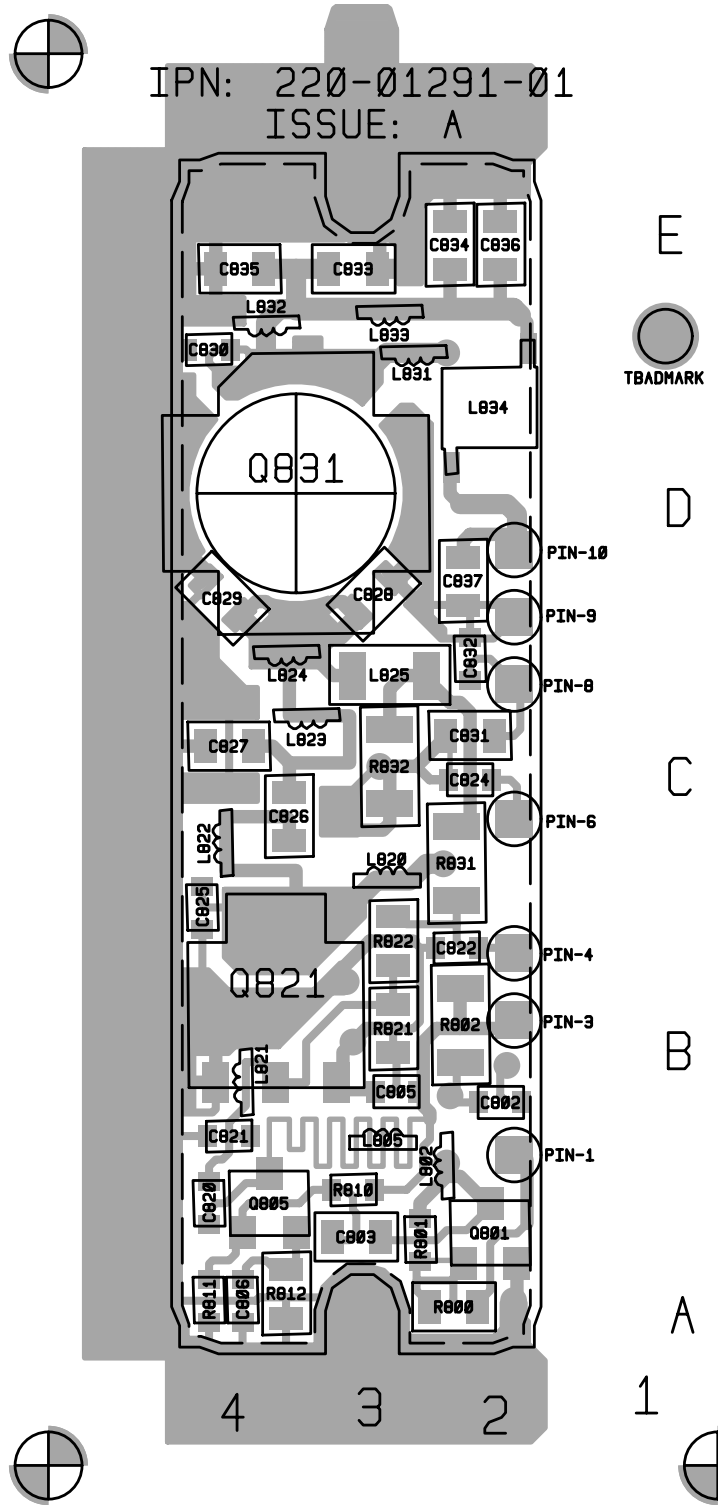


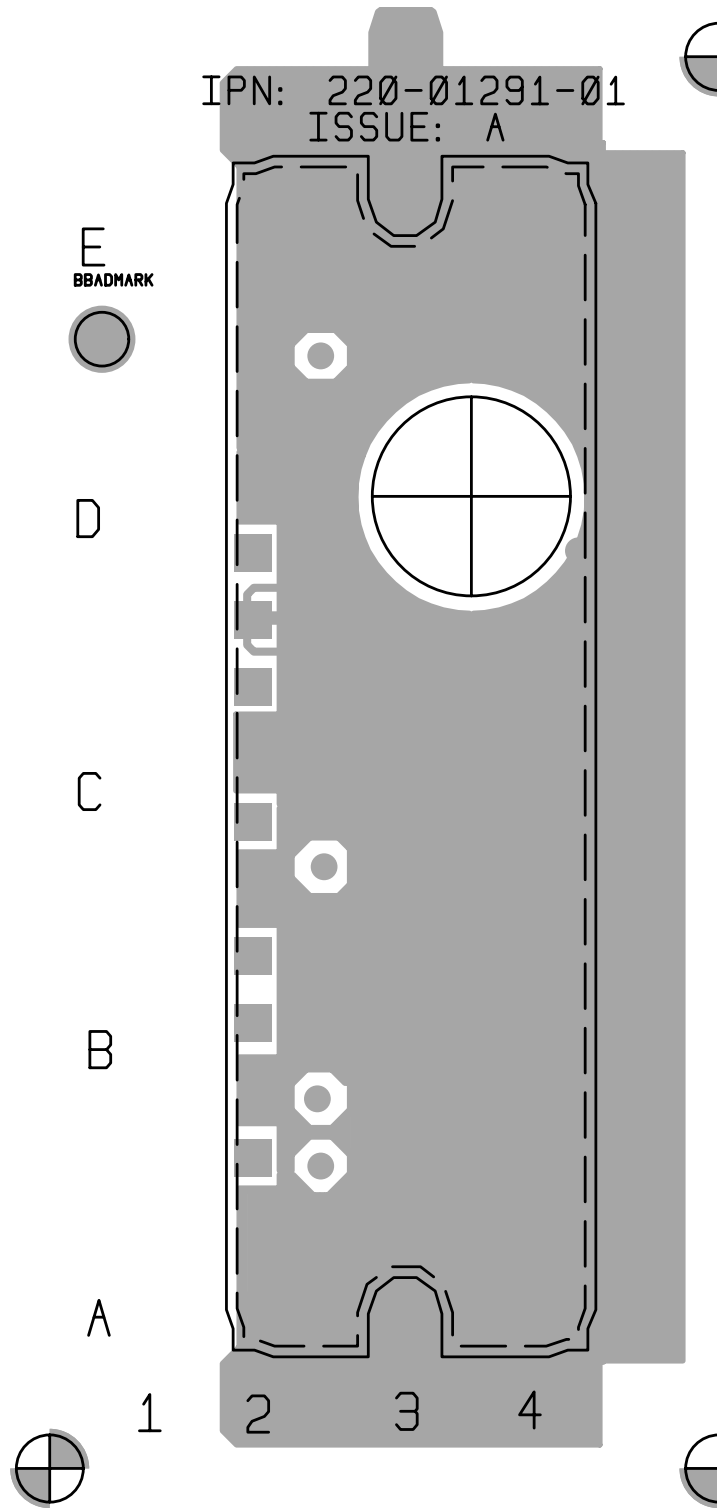
6.9 T3000-7000 PA PCB

T3000-7000 PA Parts List (IPN 220-01291-01)

Ref	Var	IPN	Description	Ref	Var	IPN	Description
C803		015-22100-01	CAP CER 0805 CHIP 10P +/-0.5P NPO 50V				
C805		018-14100-00	CAP 0603 CHIP 1N 50V X7R +-10%				
C806		018-13100-00	CAP 0603 CHIP 100P 50V NPO +-5%				
C820		018-12180-00	CAP 0603 CHIP 18P 50V NPO +-5%				
C821		018-12330-00	CAP 0603 CHIP 33P 50V NPO +-5%				
C822		018-14100-00	CAP 0603 CHIP 1N 50V X7R +-10%				
C824		018-14100-00	CAP 0603 CHIP 1N 50V X7R +-10%				
C825		018-11820-00	CAP 0603 CHIP 8P2 50V NPO +-0.25P				
C826		015-22220-01	CAP CER 0805 CHIP 22P 5% NPO 50V				
C827		015-22220-01	CAP CER 0805 CHIP 22P 5% NPO 50V				
C828		015-22680-01	CAP CER 0805 CHIP 68P 5% NPO 50V				
C829		015-22680-01	CAP CER 0805 CHIP 68P 5% NPO 50V				
C831		015-25470-08	CAP CER 0805 CHIP 47N 10% X7R 50V				
C832		018-14100-00	CAP 0603 CHIP 1N 50V X7R +-10%				
C833		015-22220-01	CAP CER 0805 CHIP 22P 5% NPO 50V				
C834		015-22100-01	CAP CER 0805 CHIP 10P 5% NPO 50V				
C835		015-22100-01	CAP CER 0805 CHIP 10P +/-0.5P NPO 50V				
C836		015-22220-01	CAP CER 0805 CHIP 22P 5% NPO 50V				
C837		015-22100-01	CAP CER 0805 CHIP 10P +/-0.5P NPO 50V				
L825		057-00015-00	IND FXD 15NH +-5% 1206 CHIP MUR LQN1A15				
L834		058-10008-00	IND SMD 8NH +-5% SPRING AIR CORE A03T				
Q801		000-10057-10	(S) XSTR SMD MMBR571 NPN SOT-23 UHF LO				
Q805		000-10095-10	(S) XSTR SMD MMBR951 NPN UHF SOT-23				
Q821		000-10050-00	(S) XSTR SMD BLT50 UHF PWR SOT-22				
Q831		000-10075-40	(S) XSTR SMD MRF754 NPN UHF 8W 7.5V 259				
R800		036-12470-00	RES M/F 0805 CHIP 47E 5%				
R801		038-15150-00	RES 0603 CHIP 15K 1/16W +-5%				
R802		036-02470-02	RES 47E 1206 CHIP 200V +-5% 250MW RC01				
R810		038-14100-00	RES 0603 CHIP 1K0 1/16W +-5%				
R811		038-13470-00	RES 0603 CHIP 470E 1/16W +-5%				
R812		036-12220-00	RES M/F 0805 CHIP 22E 5%				
R821		036-12390-00	RES M/F 0805 CHIP 39E 5%				
R822		036-13680-00	RES M/F 0805 CHIP 680E 5%				
R831		036-03150-02	RES RC-01 1206 CHIP 150E 200V 250MW				
R832		036-02100-02	RES 10E 1206 CHIP 200V 250MW RC01				
		220-01291-01	PCB 330-360MHZ PA MODULE T3000				
		302-05216-00	BRKT A4M2706 PA MODULE BAR T3000				
		356-00010-54	PIN TERMNL WAKO 055-PBR				



T3000-7000 PA PCB (IPN 220-01291-01) - Top Side



T3000-7000 PA PCB (IPN 220-01291-01) - Bottom Side

